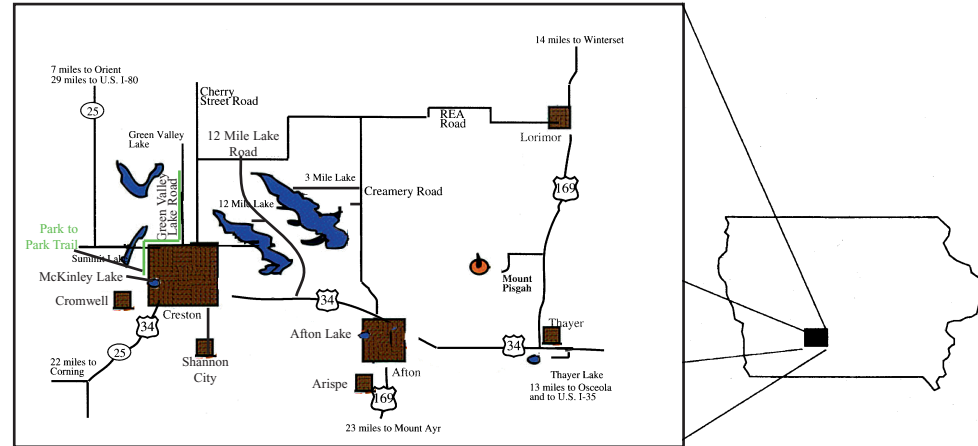


Waiting To Welcome You To Union County



ANNUAL EVENTS

CRESTON FARMERS MARKET

Mondays, early June through late September in beautiful McKinley Park
4:00 to 6:30 p.m.

LAWN CHAIR NIGHTS, TUESDAYS, MID-JUNE THRU MID-AUGUST AFTON CITY PARK

3:00 p.m. Farmers Market
6:00 p.m. Food Served
7:00 p.m. Free entertainment
www.aftoniowa.com



PRE-FOURTH CELEBRATION - LAST SUNDAY IN JUNE

Afton City Park - Contests, entertainment, food, church services, and games. Great family fun.
www.aftoniowa.com

4TH OF JULY CELEBRATION - CRESTON - JULY 2, 3 & 4

Parade, flea market, talent show, fireworks, historical tours, school reunions, musical entertainment, street dance, tractor pull, and more.
In addition, Union County Historical Museum, Pioneer Day demonstrations of early pioneer activities set in replica of a 1880's pioneer village takes place on the 4th.
www.crestoniowachamber.com

UNION COUNTY FAIR, AFTON - JULY

Fairgrounds, Afton. Parade, 4-H displays, FFA & open class exhibits, society horse show, rodeo, demolition derby, tractor pulls highlight fair week.
www.ucfair.com

MCKINLEY PARK FESTIVAL IN CRESTON

LAST SATURDAY IN JULY

Enjoy family fun in beautiful McKinley Park. Children's games, fishing derby, great food, live auction, music and more in this beautiful park.
www.mckinleylakepark.org

LORIMOR WATERMELON DAYS SECOND SATURDAY IN SEPTEMBER

Parade, flea market, arts & crafts show, kids games, talent show, and bingo. www.lorimor.org



CRESTON/S.W. IOWA HOT AIR BALLOON DAYS THIRD WEEKEND IN SEPTEMBER

Come enjoy one of the largest hot air balloon events in the midwest. The event celebrates over 35 years of ballooning. Now over 50 balloons, 4 balloon flights plus night glow, flea market & craft show, parade of bands, food, 5K run and other activities add to the fun.
www.crestoniowachamber.com

CRESTON'S LIGHTED CHRISTMAS PARADE UPTOWN CRESTON

THE THURSDAY AFTER THANKSGIVING

Over 50 entries in a night time parade featuring lighted floats, soup supper at the mealsite in restored Depot, quilt show, plus caroling and other activities.
www.crestoniowachamber.com

DISCOVER THE COMFORT AND JOY QUILT SHOW, FESTIVALS OF TREES AND MORE IN UPTOWN CRESTON - THE THURSDAY AFTER THANKSGIVING AND FOR THREE DAYS AFTER

The show set in a beautiful holiday setting features over 100 quilts and quilted items. During the show a block walk takes place throughout Uptown Creston.
www.crestoniowachamber.com

AFTON EXTRAVAGANZA

The first Saturday in December
This annual event has it all - arts & craft vendors, food vendors, and pictures with Santa. Visit www.aftoniowa.com

LODGING MOTELS and B & B's in the Area

ADAMS STREET COUNTRY LODGE B & B

1412 170th St., Creston
641-344-5478
www.adamsstreetcountrylodge.com

SUPER 8 OF CRESTON

804 W. Taylor, Hwy 34 West, Creston - 641-782-6541
www.super8.com

GREEN VALLEY STATE PARK CABINS

Green Valley State Park - 641-782-5131
www.iowadnr.gov

HOLIDAY MOTEL

800 S. Walnut, Hwy 34 East, Creston - 641-782-1644

MOONLITE MOTEL

704 New York Ave., Hwy 34 West, Creston - 641-782-4422

THREE LAKES LODGE

801 N. Pierce, Afton
641-344-1959

THREE-MILE LAKE CABINS

Three-Mile Lake - 641-347-5100

TIMBERVIEW B & B

2011 Ringgold-Union Street, Shannon City - 877-339-2431
wordweaver@hughes.net

SUPTEL INN AND CONFERENCE CENTER

The Supertel Inn offers a large conference room and a meeting room to accommodate groups from 12 to 250.
800 Laurel, Hwy 34 West, Creston - 641-782-7873
www.supertelinn.com

Camping information is included in the Outdoor Recreation Areas and other Attractions section of this brochure.

For More Information Contact Creston/Union County Tourism

208 W. Taylor, P.O. Box 471, Creston, Iowa 50801
641-782-7022

www.unioncountyiowatourism.com
email: tourism@crestoniowachamber.com

Explore Creston & Union County

Creston, Afton,
Lorimor, Cromwell,
Arispe, Shannon City,
& Thayer



Creston/Southwest Iowa Hot Air Balloon Days

Held the Third Weekend in September

More than 50 balloons participate in races over the weekend. In addition, there is a parade with a marching band contest, a doll display, arts & crafts fair, flea market, balloon night glow, food booths and more. Come for the day or the weekend.

Please visit www.crestoniowachamber.com
for a complete listing of events.

OUTDOOR RECREATION AREAS AND OTHER ATTRACTIONS

GREEN VALLEY STATE PARK

Three miles north of Creston on Lincoln Street/ Green Valley Road, this 1000 acre state park and 390 acre lake attracts outdoor enthusiasts for many reasons. One being the 100 newly renovated campsites – 83 with electrical hookup and 18 of these are full hookups with water and sewer. In addition, you will find seasonal cabins to rent, a playground area located in the campground and a swimming beach, all types of boating, water skiing and speed boating are allowed in a designated area. There are a number of fishing jetties and two fishing piers for persons with varying ability. Over 14 miles of hiking trails can be found in and around the park. Call 641-782-5131 for more information.



3-MILE LAKE

The newest and largest lake of the area, is one of the best fishing lakes in Iowa and has approximately 2,100 acres with 900 surface acres of water. This is Union County's largest recreational facility. It offers 80 electrical campsites to accommodate recreational vehicles, trailers, and tent campers along with fishing, swimming, skiing, and public hunting. A rustic trail can be enjoyed around the lake. Eight cabins and Three Mile Lake Lodge are available to rent year round. Call 641-347-5100 to reserve a cabin, campsite, or the lodge. From Hwy. 34, 3-Mile Lake is located three miles north of Afton on County Road P53.



12-MILE LAKE

Twelve-Mile Lake has a standing reputation as one of the best fishing lakes in Iowa. Walleye, largemouth bass, crappie and channel catfish and bluegill offer great angling opportunities year-around. Shoreline access is available through three boat ramps. Boaters may operate at no-wake speeds only. This 1500 acre park offers recreation enthusiasts a place to not only fish, but hunt, hike and bird watch. Call 641-347-5100 for more information. Twelve-Mile Lake is located four miles east of Creston, just off U.S. Highway 34.

THAYER LAKE

Thayer Lake, one of the oldest man-made lakes in Iowa, is a good small lake for bass, panfish and catfish. Water levels fluctuate little in dry or wet years because the lake is spring-fed. Although fishing boats are allowed, most anglers do just as well angling from the shoreline. Primitive camping is welcome anywhere around this 10-acre, spring-fed lake and 47 acre nature area. Pitch your tent or bring your camper. Electrical hook-ups are available. For more information on camping, contact the Union County Conservation Office at 641-347-5100. Thayer Lake is located just south of Highway 34, near the town of Thayer. It is about 20 miles east of Creston.

SUMMIT LAKE

This lake is located about 1/4 mile west of Creston off of State Highway 25 west. A concrete boat ramp just off the Summit Lake Bridge on State Highway 25 offers easy all-weather access for fishermen.

AFTON LAKE

Afton Lake provides excellent bluegill, catfish and bass fishing opportunities. a boat ramp, playground and picnic tables are available. Afton Lake is located just 1-1/2 miles west of Afton on old Highway 34.

McKINLEY PARK

This picturesque park, located in the northwest section of Creston, has an all purpose court, picnic and camping areas including Creston McKinley Campers Camp Ground with 38 electrical hook-ups and water, eight shelter houses, a band shell, 18 hole disc golf course and playground areas. Part of the park is beautiful McKinley Lake. Also at the park is a Leisure Pool featuring a wading pool, heated swimming pool, two diving boards and a large slide. The Union County Historical Complex is located at McKinley Park. For information call 641-782-2000 ext. 2. McKinley Park is the beginning of the five plus mile paved trail that runs through west Creston and then north to Green Valley State Park.



RAINBOW PARK

Located in the 500 block of South Vine and South Birch in Creston this park has two shelter houses, a beautifully restored fountain, playground, disc golf course, picnic area and gazebo band shell.

AFTON CITY PARK

On the city square in Afton, this picturesque park offers a playground, historic band shell, picnic area, fenced recreation area and restrooms. During the summer enjoy Lawn Chair Nights on Tuesdays.

CEDAR PARK

Twelve acre Cedar Park is a favorite for family and community outings. It has a small pond, enclosed shelter with potable water, electricity and restrooms. A 1/4 mile trail, complete with footbridges leads to the butterfly garden, a relaxing spot to observe nature on a warm summer day. To reach Cedar Park, go east on Highway 34 to Iris Ave. then take Iris to 190 St. and go approximately 1 1/4 mile.

GARFIELD PARK

Located at the west edge of Afton, this 10-acre oak-hickory timbered park provides a beautiful picnic area with an enclosed shelter, water and electricity. Primitive camping is available with electrical hook-ups. Contact the Union County Conservation Board for enclosed shelter reservations and keys at 641-347-5100.

LORIMOR CITY PARK

This park is located on the west edge of Lorimor, and provides a restful setting with a shelter house, playground equipment, restrooms and many shade trees, all in a peaceful, country setting.



LIONS PARK

Lions Park is located along Hwy. 169 at the southern edge of Lorimor. It has two shelter houses and restrooms.

TALMAGE HILL NATURE PARK

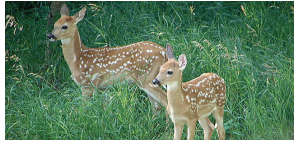
With 36 acres of native timber, this area was acquired to preserve its natural beauty. A leisurely walk along the hiking trail and a watchful eye can usually find an abundance of wildlife as well as wildflowers in the spring. Located along the south side of Highway 34, 2 miles west of Thayer on Umbrella Ave., this area offers a shelter house, restrooms and picnic facilities.

ARISPE ROADSIDE PARK

Along Highway 169. A shady rest area with 2 picnic shelters and playground can be enjoyed.

GROSSBECK WILDLIFE AREA

This 112-acre area northeast of Afton offers almost everything a hunter could want, from timber to open grassland. The 4 acre pond with nesting island provides excellent fishing. To reach this area take US Highway 169 North to Lorimor then go west on the REA Road to Grand River Drive and go south for a 1 1/2 mile.



TALMAGE HILL WILDLIFE AREA

This 210-acre area on the north side of Highway 34, 2 miles west of Thayer at 2985 US Highway 34, is one of the County's most beautiful natural areas. It abounds with habitat diversity, from the pond, marsh and timbered areas to the upland game areas. It is used extensively by wildlife enthusiasts as well as for an outdoor classroom for environmental education.

HIGH LAKES SHOOTING RANGE

The High Lakes Shooting Range is located north of Three Mile Lake. When it is completed it will have 5 trap houses, a skeet field, a multi stand pistol range and long gun capabilities of over 600 yards.

PARK TO PARK TRAIL

The five plus mile paved walking/biking trail extends through McKinley Park to the south edge of Green Valley State Park. It then connects with the 9.5 miles of trails around Green Valley Lake, which are being updated over the next few years.



CRESTMoor GOLF CLUB

This beautiful private 9-hole course is on Highway 25 north in Creston. For information call 641-782-2771.

LAKESHORE GOLF & COUNTRY CLUB

This private 9-hole course is located on Highway 34 West near Afton. The phone number is 641-347-5221.

PINE VALLEY GOLF & BOWL

This public 9-hole course is on Highway 34 West in Creston. Pine Valley also has one of the two bowling centers in town. Call 641-782-4917 for more information.

SOUTHERN PRAIRIE YMCA

Located at 1201 W. Townline in Creston, the YMCA has a six-lane indoor swimming pool, double size gymnasium, an indoor three-lane walking/jogging track, racquetball court, fitness equipment room, and locker room facilities. Inquiries may be made by calling 641-782-9622.

PANTHER LANES

Located at 301 N. Cherry Street in Creston, Panther Lanes is one of two bowling alley's in the community.

HISTORICAL ATTRACTIONS

MT. PISGAH MORMON NATIONAL MONUMENT

Located south of Lorimor approximately 4 miles, then west at the Beulah Cemetery, 167th Street and follow the signs. Mt. Pisgah was the rest camp for the Mormon trek from Nauvoo, Illinois, to Salt Lake City, Utah. A monument has been erected at this site in memory of those who did not survive. A cabin, picnic facilities and rest area are available. Tours are available by calling 641-763-2504 or email bbrown1704@yahoo.com.



UNION COUNTY HISTORICAL COMPLEX

This complex is located at the south end of McKinley Park in Creston and depicts an Iowa rural community of the 1800's. It is composed of 15 buildings and a museum. The Historical Complex is open June through Labor Day weekend, from 1 p.m. to 4:30 p.m. Friday, Saturday, and Sunday. Call 641-782-4352 or 641-782-4000 for more information or a tour.



CRESTON'S RESTORED DEPOT

The restored depot signifies Creston's railroad heritage. The depot, built in 1899, is listed on the National Register of Historic Places. Inside and out you can see the building's rich heritage. Stop and enjoy the more than 50 trains that pass by daily. Call 641-782-7022 for more information or a tour. The Depot is located at 116 West Adams Street.



FRANK PHILLIPS VISITOR'S INFORMATION CENTER

The Visitors Center is in a renovated Phillips 66 Gasoline Station that was built in 1931 and was one of the first operating Phillips stations in Iowa. It is located on Highway 34 West in Creston and is open daily from mid-May to mid-October. Call 641-782-7022 for more information.

